



# CHAPTER RECOGNIZES EXCELLENCE IN CONSTRUCTION

The Projects of Distinction (POD) Excellence in Construction Awards Banquet acknowledged 54 very distinct projects at the February. Projects of Distinction provides an opportunity for ABC and its members to highlight the quality and professionalism of projects built on merit. For details on each award, please visit [ABCWI.org/POD](http://ABCWI.org/POD).

For the eighth consecutive year, the “Built on Merit” Award was presented to Friede & Associates for using the highest number of fellow ABC members on the Kalahari Conference Center Expansion project. Friede & Associates used 32 contractor and supplier members on the project. Congratulations and thanks to Friede & Associates for dedication to merit construction!

Also, as part of the awards program, Jack Vogel of Hill’s Wiring was awarded the 2019 Wes Meilahn Award for his dedication and tenacity toward ABC of Wisconsin and merit construction.



Bob Engler (pictured left) bestows the Meilahn Award to Jack Vogel (pictured right).



**Balanced Rock Winery**  
Friede & Associates



**Big Apple Early Learning Academy**  
KSW Construction



**Big Joe's Lift**  
Holtz Builders, Inc



**Glen Erin Golf Club Banquet Hall**  
Gilbank Construction, Inc.



**Vintage Brewing Company - Capitol East** / Friede & Associates



**Holiday Inn Express & Suites**  
WDS Construction, Inc.



**McFarland State Bank**  
KSW Construction



**Punch Bowl Social**  
WDS Construction, Inc.



**School District of Beloit New Welcome Center** / Gilbank Construction, Inc.



**Sleep Inn**  
Friede & Associates



**Tri City Glass & Door**  
Keller, Inc.



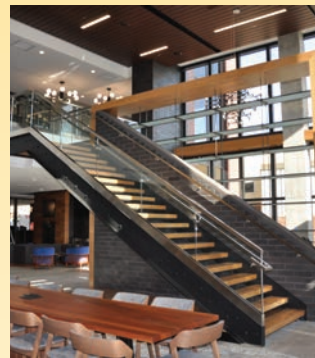
**Duluth Trading Company Corporate Headquarters** / National Construction



**Kalahari Conference Center Expansion** / Friede & Associates



**Parkdale Mall**  
WDS Construction, Inc.



**Springhill Suites**  
Kraemer Brothers



**Staybridge Suites**  
Holtz Builders, Inc



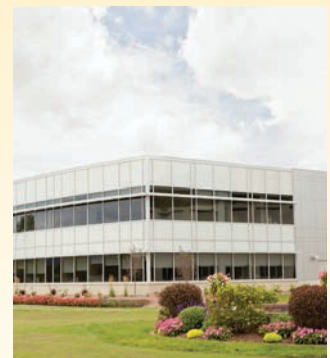
**The Lodge at Mauston**  
JKC, LLC



**Eagleview Dental**  
Keller, Inc.



**Saint Michael's Hospital - Nuc Med/Cath Lab** / Ellis Construction



**Aspirus Wausau Hospital - Cancer Center** / Ellis Construction



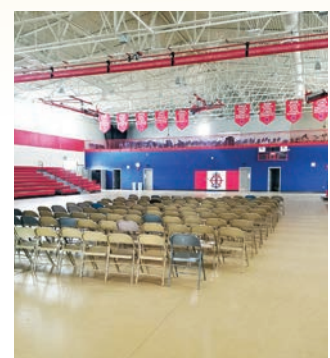
**Cedar Valley Cheese**  
WDS Construction, Inc.



**Kwik Trip Bakery - Bread/Bun Line Production Facility** / Wieser Brothers



**Sacred Heart Adoration Chapel**  
Friede & Associates



**Des Lacs High School**  
Consolidated Construction Co., Inc.



**Prairie Ridge Intermediate School**  
Kraemer Brothers



**Hotel Goodwin | Velvet Buffalo Cafe** / Corporate Contractors Inc.



**Schmeckle Reserve - Amphitheater Development** / Ellis Construction



**Hatch Distilling Company**  
Keller, Inc.



**Federal Foam Technologies, Inc.**  
Derrick Building Solutions



**Oakstone Recreational**  
Friede & Associates



**Dane County BioGas Facility**  
Joe Daniels Construction Co., Inc



**Frame Park**  
Ford Construction



**White Mound County Park Office Building** / Friede & Associates



**The Current**  
McGann Construction



**The Edge**  
Stevens Construction Corp.



**The Oaks of Shorewood**  
Stevens Construction Corp.



**Harborview Hotel Remodel**  
Northcentral Construction



**Hotel Indigo**  
Stevens Construction Corp.



**J.J. Keller**  
Keller, Inc.



**Sundara Renovation**  
Holtz Builders, Inc.



**The 42**  
Stevens Construction Corp.



**Truk't | Blue Collar Coffee**  
Corporate Contractors Inc.



**Waite Rug Place**  
McGann Construction



**Illumina - New Research Facility**  
Faith Technologies, Inc.



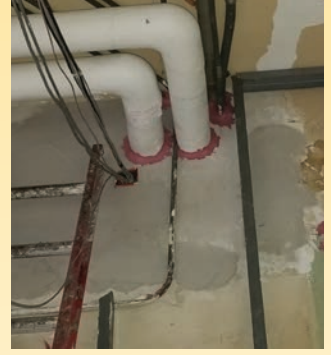
**SECURA Insurance - Headquarters**  
Faith Technologies, Inc.



**Children's Hospital T-ratings /**  
Alpha Insulation and Waterproofing, Inc.



**Froedtert Hospital Vertical Expansion /**  
Alpha Insulation and Waterproofing, Inc.



**Milwaukee City Hall 3rd floor renovation /**  
Alpha Insulation and Waterproofing, Inc.



**MicroStar Logistics**  
Performance Firestop



**MGS Clean Room**  
Steiner Electric, Inc.



**Exact Sciences - Manufacturing and Production /**  
Faith Technologies, Inc.



**Kerry Ingredients Titanium Project /**  
Steiner Electric, Inc.



**Exact Sciences Mfg. and Clinical Science Building /**  
North American Mechanical, Inc. (HVAC)



**Exact Sciences Mfg. and Clinical Science Building /**  
North American Mechanical, Inc. (HVAC)



**Projects of Distinction**

For details on each award,  
please visit [ABCWI.org](http://ABCWI.org)